



Shanghai LiangChi Cooling Equipment Co., Ltd

Chexin Road No.507, Che Dun Town , Songjiang District of shanghai, China

TEL: 021-57609600

FAX: 021-57609588

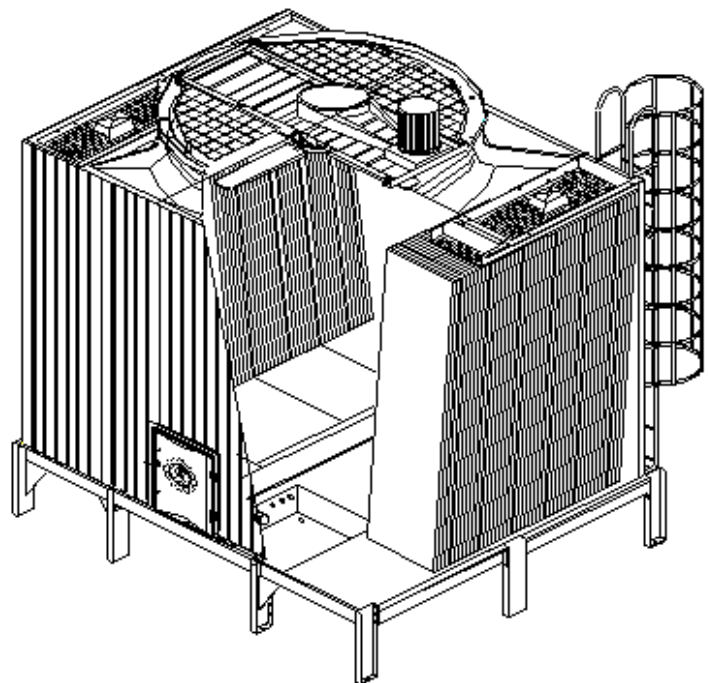
URL: [Http://www.liangchi.com.cn](http://www.liangchi.com.cn)

MAIL: lcjsb@liangchi.com.cn



LRS- Cross Flow Induced Draft Cooling Tower

Design Information



LRS-1001-9061



I. Outline of models

(open type, Cross-flow, and induced-draft)

Tower Model	Dimensions (mm)					Fan Assembly			
	Width	Length	Height			Motor			Fan Dia
LRS-	W	L	h ₁	h ₂	H	Kw	Hp	Num/Set	D (mm)
1001	3080	1405	3350	820	4170	1.5	2	1	1170
1002	3080	1605	3350	820	4170	1.5	2	1	1260
1003	3280	1805	3350	820	4170	3.0	4	1	1470
1011	3280	2005	3350	820	4170	3.7	5	1	1470
1020	3580	2410	3350	880	4230	3.7	5	1	1750
1030	3780	2510	3350	880	4230	5.5	7.5	1	1980
1050	3780	2810	3350	880	4230	5.5	7.5	1	1980
3020	4180	2910	3350	1210	4560	7.5	10	1	2350
3030	5480	2810	3400	1210	4610	7.5	10	1	2350
3050	5480	2810	3800	1210	5010	7.5	10	1	2350
5015	6080	3320	3800	1365	5165	7.5	10	1	2970
5018	6080	3320	4600	1450	6050	11	15	1	2970
5050	6080	3620	5000	1450	6450	11	15	1	2970
8016	6480	4020	5000	1575	6575	15	20	1	3380
8017	6480	4420	5000	1575	6575	15	20	1	3380
8019	6680	4420	5000	1940	6940	22	30	1	3580
9021	6680	5020	5000	1940	6940	22	30	1	3580
9031	7380	5620	5000	1940	6940	22	30	1	4270
9051	7380	6020	5000	1940	6940	30	40	1	4270
9061	7380	7020	5000	1940	6940	37	50	1	4270



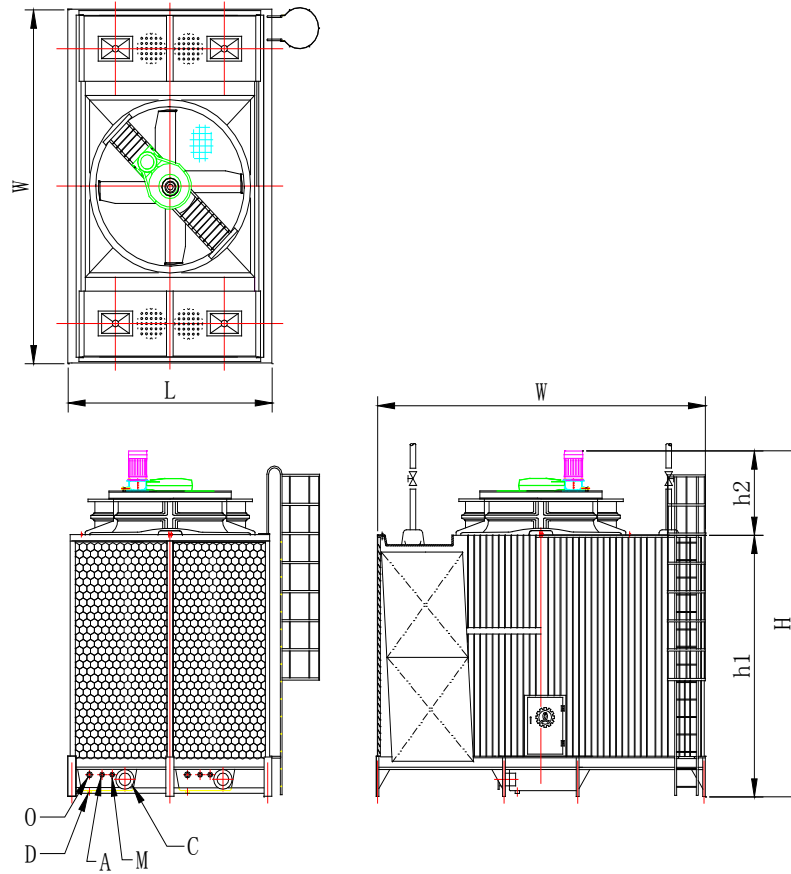
Tower Model	Connecting Pipe Dimension (mm)						Dry Wt. (Kg)	Operating Wt (Kg)	Tower Head (M)
	Inlet	Outlet	Drain	Over flow	Filler				
LRS-	I	C	D	O	Auto(A)	Quick(M)			
1001	DN80 x2	DN100 x1	DN50 x1	DN50 x1	DN20 x1	DN20 x1	870	2420	4.0
1002	DN80 x2	DN125 x1	DN50 x1	DN50 x1	DN25 x1	DN25 x1	940	2580	4.0
1003	DN100 x2	DN125 x1	DN50 x1	DN50 x1	DN25 x1	DN25 x1	1020	2830	4.0
1011	DN100 x2	DN150 x1	DN50 x1	DN50 x1	DN32 x1	DN32 x1	1120	2980	4.0
1020	DN125 x2	DN200 x1	DN50 x1	DN50 x1	DN32 x1	DN32 x1	1330	3630	4.0
1030	DN125 x2	DN200 x1	DN50 x1	DN50 x1	DN32 x1	DN32 x1	1450	4030	4.0
1050	DN125 x2	DN200 x1	DN50 x1	DN50 x1	DN32 x1	DN32 x1	1580	4350	4.0
3020	DN125 x2	DN200 x1	DN50 x1	DN50 x1	DN32 x1	DN32 x1	1770	4540	4.0
3030	DN125 x2	DN200 x1	DN50 x1	DN50 x1	DN32 x1	DN32 x1	2140	5350	4.0
3050	DN125 x2	DN200 x1	DN50 x1	DN50 x1	DN32 x1	DN32 x1	2240	6180	4.4
5015	DN125 x2	DN200 x1	DN50 x1	DN50 x1	DN32 x1	DN32 x1	2300	6430	4.8
5018	DN125 x2	DN250 x1	DN50 x1	DN50 x1	DN32 x1	DN32 x1	2420	6830	5.6
5050	DN125 x4	DN250 x1	DN50 x2	DN50 x2	DN32 x2	DN32 x2	3160	7680	5.6
8016	DN125 x4	DN200 x2	DN50 x2	DN50 x2	DN32 x2	DN32 x2	3760	8860	5.6
8017	DN150 x4	DN200 x2	DN50 x2	DN50 x2	DN32 x2	DN32 x2	3910	9480	5.6
8019	DN150 x4	DN200 x2	DN50 x2	DN50 x2	DN32 x2	DN32 x2	4290	10110	5.6
9021	DN150 x4	DN250 x2	DN50 x2	DN50 x2	DN32 x2	DN32 x2	4390	11050	5.6
9031	DN150 x4	DN250 x2	DN50 x2	DN50 x2	DN32 x2	DN32 x2	5170	13160	5.6
9051	DN125 x8	DN200 x4	DN50 x4	DN50 x4	DN32 x4	DN32 x4	5520	14920	5.6
9061	DN125 x8	DN200 x4	DN50 x4	DN50 x4	DN32 x4	DN32 x4	5980	16410	5.6

* Significance of the model names:

LRS-	-	1001
Rectangular, Cross-flow, Low noise		Cooling tower code

II. Drawings:

(1) Model: LRS-1001-9061



LRS-1001~9061