

**Rosemex Inc.**

1560 Marie-Victorin Blvd., Saint-Bruno, Montreal, Quebec, Canada J3V 6B9

TEL: 1-450-6531002

FAX: 1-450-6533464

URL: [www.rosemex.com](http://www.rosemex.com)

**Shanghai Office**

4<sup>th</sup>Floor, 4727 Gonghexin Rd., Shanghai, China, 200435

TEL: (86)-21-56389411

FAX: (86)-21-56382762

URL: [www.rosemex-coolingtower.com](http://www.rosemex-coolingtower.com)

MAIL: [sales@rosemex-coolingtower.com](mailto:sales@rosemex-coolingtower.com)

Contacts: Alfred Ng, 1-604-6578741



## **ROS/D Open Cross-flow, Induced-draft Cooling Tower**

### Design Information





## I. Outline of models

(open type, cross flow, and induced draft)

Models	Cooling capacity	Fan system		Outline Size			Inlet	Outlet	Weight	
	(37-32-28 °C)	Power	Diameter	L	W	H			Shipping Weight	Operating Weight
	m <sup>3</sup> /h	KW	mm	mm	mm	mm			DN mm	DN mm
ROD-821D	84	2.2	1600	2250	3792	2992	DN100x2	DN150x1	1550	3650
ROD-821P	93	3	1600	2250	3792	2992	DN100x2	DN150x1	1660	3790
ROD-821G	104	4	1600	2250	3792	2992	DN100x2	DN150x1	1710	3850
ROD-822D	106	3	1800	2250	3792	3492	DN100x2	DN150x1	2050	4180
ROD-822P	118	4	1800	2250	3792	3492	DN100x2	DN150x1	2150	4280
ROD-822G	132	5.5	1800	2250	3792	3492	DN100x2	DN150x1	2180	4300
ROD-832D	148	5.5	2000	2476	4792	3492	DN125x2	DN200x1	2600	5500
ROD-832P	160	7.5	2000	2476	4792	3492	DN125x2	DN200x1	2680	5600
ROD-832G	182	11	2000	2476	4792	3492	DN125x2	DN200x1	2700	5670
ROD-842D	210	7.5	2200	2690	4792	3492	DN125x2	DN200x1	2830	6150
ROD-842P	240	11	2200	2690	4792	3492	DN125x2	DN200x1	3000	6230
ROD-842G	265	15	2200	2690	4792	3492	DN125x2	DN200x1	3230	6450
ROD-852D	228	7.5	2400	2976	5220	3492	DN150x2	DN250x1	3380	7190
ROD-852P	258	11	2400	2976	5220	3492	DN150x2	DN250x1	3530	7410
ROD-852G	288	15	2400	2976	5220	3492	DN150x2	DN250x1	3750	7630
ROD-854D	349	15	2600	2976	5220	5106	DN150x2	DN250x1	4150	8800
ROD-854P	377	18.5	2600	2976	5220	5106	DN150x2	DN250x1	4180	8850
ROD-854G	398	22	2600	2976	5220	5106	DN150x2	DN250x1	4360	9020
ROD-873D	385	15	3100	3620	6396	4150	DN125x4	DN250x1	5120	9750
ROD-873P	410	18.5	3100	3620	6396	4150	DN125x4	DN250x1	5150	9890



ROD-873S	438	22	3100	3620	6396	4150	DN125x4	DN250x1	5280	10400
ROD-873U	485	30	3100	3620	6396	4150	DN125x4	DN250x1	5360	10800
ROD-873L	518	37	3100	3620	6396	4150	DN125x4	DN250x1	5410	11100
ROD-873G	554	45	3100	3620	6396	4150	DN125x4	DN250x1	5450	11600
ROD-874P	502	22	3100	3620	6396	5106	DN125x4	DN300x1	5980	12500
ROD-874U	557	30	3100	3620	6396	5106	DN125x4	DN300x1	6100	12800
ROD-874L	598	37	3100	3620	6396	5106	DN125x4	DN300x1	6190	13100
ROD-874G	637	45	3100	3620	6396	5106	DN125x4	DN300x1	6340	13400
ROD-875P	615	30	3100	3620	6396	6455	DN150x4	DN300x1	7010	14100
ROD-875U	660	37	3100	3620	6396	6455	DN150x4	DN300x1	7080	14300
ROD-875L	701	45	3100	3620	6396	6455	DN150x4	DN300x1	7130	15000
ROD-875G	752	55	3100	3620	6396	6455	DN150x4	DN300x1	7250	15400
ROD-893D	425	15	3900	4250	7316	4150	DN125x4	DN250x1	6790	14000
ROD-893P	456	18.5	3900	4250	7316	4150	DN125x4	DN250x1	6820	14300
ROD-893S	486	22	3900	4250	7316	4150	DN125x4	DN300x1	7100	14600
ROD-893U	536	30	3900	4250	7316	4150	DN125x4	DN300x1	7240	15000
ROD-893L	575	37	3900	4250	7316	4150	DN125x4	DN300x1	7360	15300
ROD-893G	610	45	3900	4250	7316	4150	DN125x4	DN300x1	7510	15500
ROD-894P	618	30	3900	4250	7316	5106	DN150x4	DN350x1	8630	17300
ROD-894U	660	37	3900	4250	7316	5106	DN150x4	DN350x1	8770	17450
ROD-894L	705	45	3900	4250	7316	5106	DN150x4	DN350x1	8850	18600
ROD-894G	758	55	3900	4250	7316	5106	DN150x4	DN350x1	9010	17200
ROD-895P	735	37	3900	4250	7316	6455	DN200x4	DN400x1	9830	19000
ROD-895U	780	45	3900	4250	7316	6455	DN200x4	DN400x1	9970	19500
ROD-895L	840	55	3900	4250	7316	6455	DN200x4	DN400x1	10100	20000
ROD-895G	932	75	3900	4250	7316	6455	DN200x4	DN400x1	10300	20500
ROS-713D	56	2.2	1100	1850	2250	4150	DN100x1	DN100x1	1180	2350



ROS-713P	62	3	1100	1850	2250	4150	DN100x1	DN100x1	1230	2480
ROS-713G	69	4	1100	1850	2250	4150	DN100x1	DN100x1	1290	2540
ROS-723D	66	3	1200	1850	2610	4150	DN125x1	DN125x1	1410	2850
ROS-723P	72	4	1200	1850	2610	4150	DN125x1	DN125x1	1500	2950
ROS-723G	83	5.5	1200	1850	2610	4150	DN125x1	DN125x1	1590	3050
ROS-734D	79	4	1300	1850	2896	5106	DN150x1	DN150x1	1600	3100
ROS-734P	90	5.5	1300	1850	2896	5106	DN150x1	DN150x1	1700	3300
ROS-734G	100	7.5	1300	1850	2896	5106	DN150x1	DN150x1	1820	3450
ROS-744D	112	5.5	2000	2250	3540	5106	DN200x1	DN200x1	2050	4500
ROS-744P	125	7.5	2000	2250	3540	5106	DN200x1	DN200x1	2200	4600
ROS-744G	143	11	2000	2250	3540	5106	DN200x1	DN200x1	2420	4800

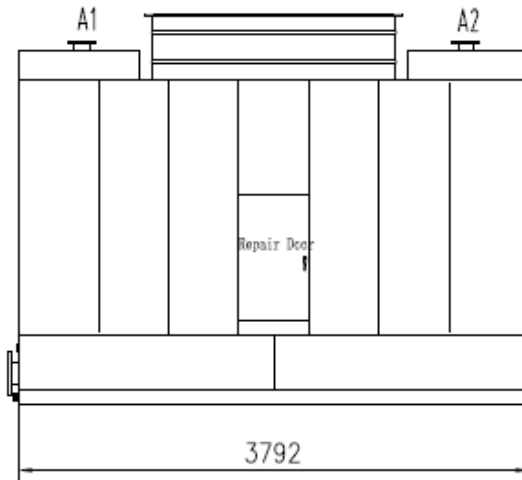
● Significance of the model names

☆ For Rosemex:

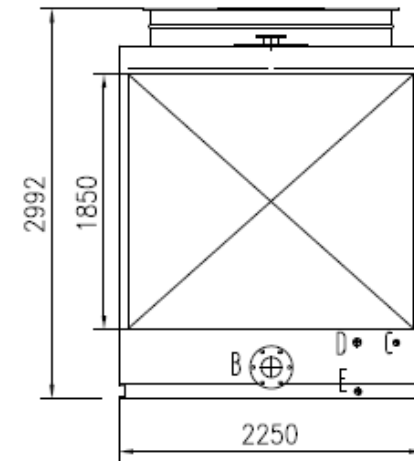
R	0	S/D	-	821	D
Rosemex	Open type Cooling Tower	Single/Double louver		Model code	Noise Level

**II. Drawings:**

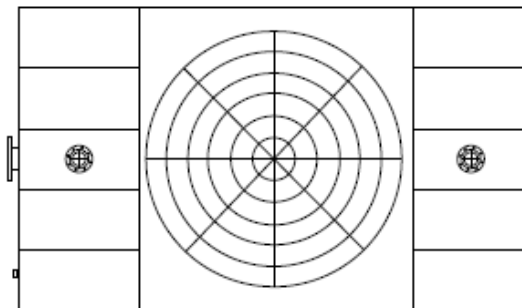
1) Model ROD-821 (D, P, G)



VIEW 2



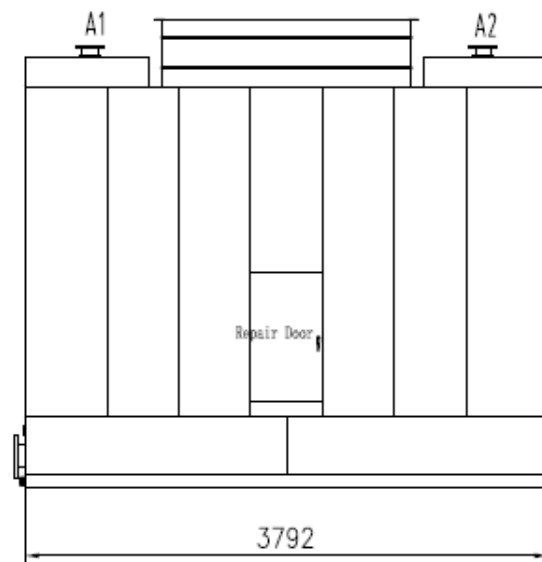
VIEW 1



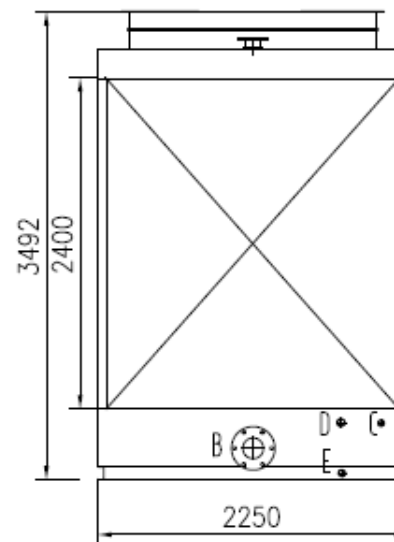
VIEW 3

pipe table				
Symbol	Size	standard	seal type	used for
A1	DN100	HG20593,20599	RF	Inlet water
A2	DN100	HG20593,20599	RF	Inlet water
B	DN150	HG20593,20599	RF	Out water
C	DN25	G1'(G pipe thread)	G pipe	water pick up
D	DN50	G2'(G pipe thread)	G pipe	over flow
E	DN50	G2'(G pipe thread)	G pipe	sewage

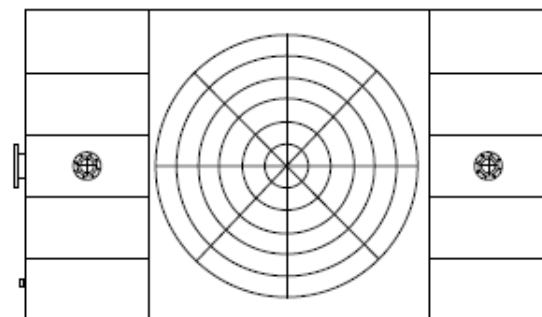
2) Model ROD-822 (D, P, G)



VIEW 2



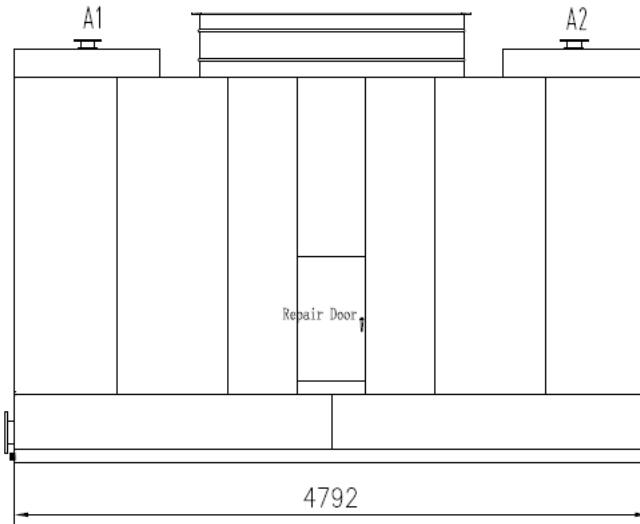
VIEW 1



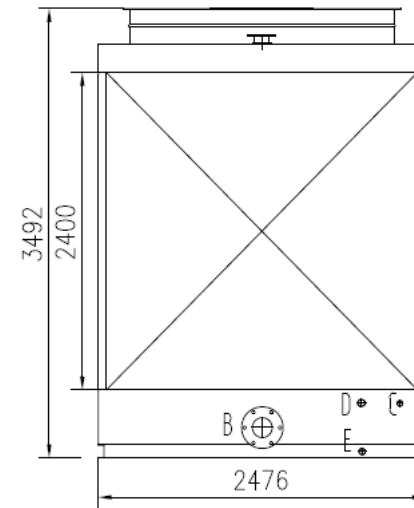
VIEW 3

pipe table				
Symbol	Size	standard	seal type	used for
A1	DN100	HG20593,20599	RF	Inlet water
A2	DN100	HG20593,20599	RF	Inlet water
B	DN150	HG20593,20599	RF	Out water
C	DN25	G1'(G pipe thread)	G pipe	water pick up
D	DN50	G2'(G pipe thread)	G pipe	over flow
E	DN50	G2'(G pipe thread)	G pipe	sewage

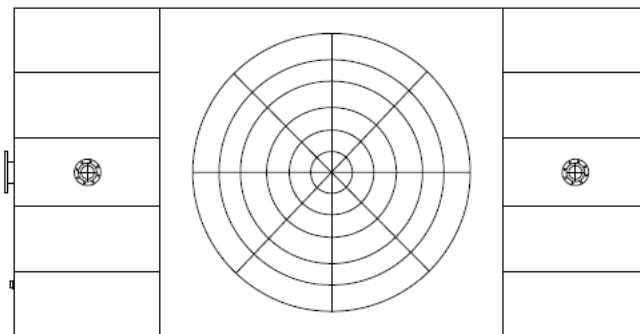
3) Model ROD-832 (D, P, G)



VIEW 2



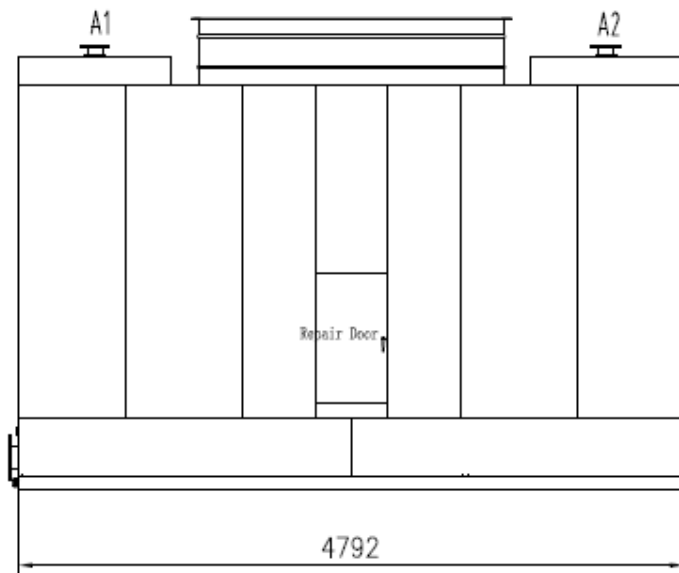
VIEW 1



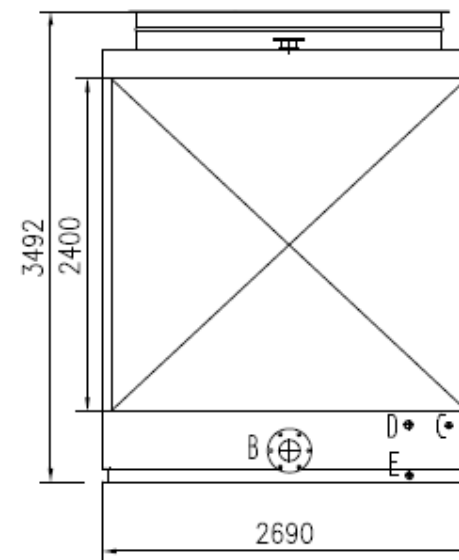
VIEW 3

pipe table				
Symbol	Size	standard	seal type	used for
A1	DN125	HG20593,20599	RF	Inlet water
A2	DN125	HG20593,20599	RF	Inlet water
B	DN200	HG20593,20599	RF	Out water
C	DN25	G1'(G pipe thread)	G pipe	water pick up
D	DN50	G2'(G pipe thread)	G pipe	over flow
E	DN50	G2'(G pipe thread)	G pipe	sewage

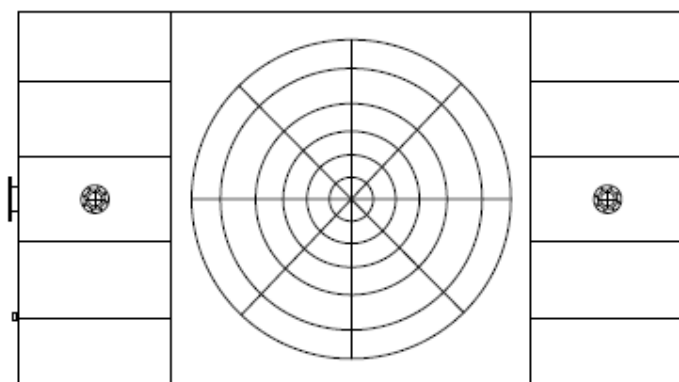
4) Model ROD-842 (D, P, G)



VIEW 2



VIEW 1

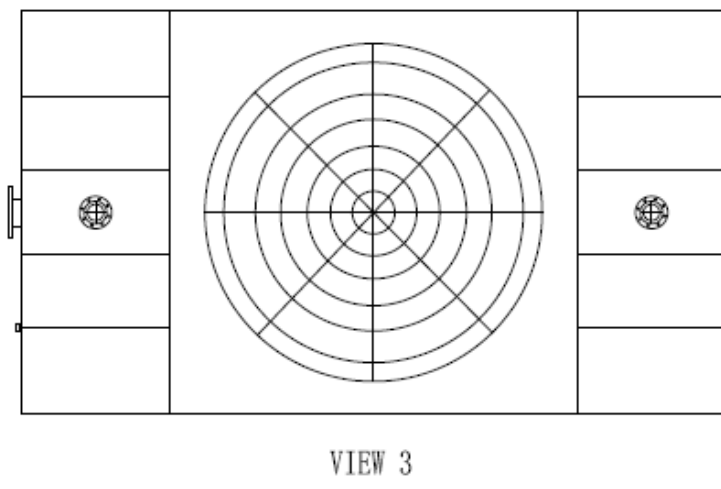
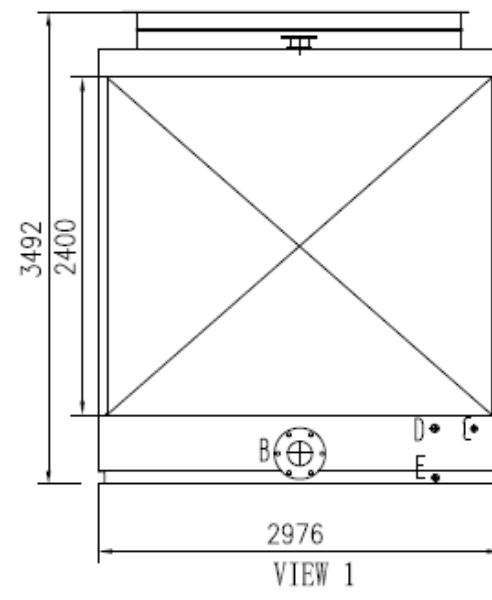
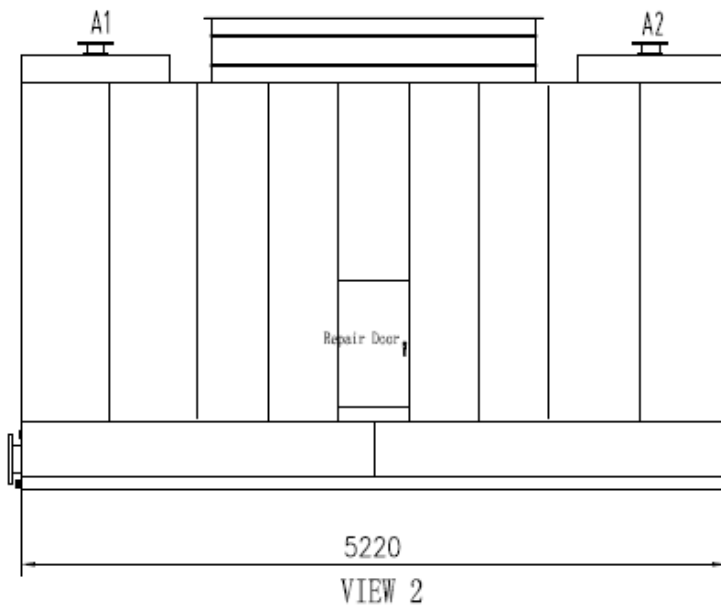


VIEW 3

pipe table				
Symbol	Size	standard	seal type	used for
A1	DN125	HG20593,20599	RF	Inlet water
A2	DN125	HG20593,20599	RF	Inlet water
B	DN200	HG20593,20599	RF	Out water
C	DN25	G1'(G pipe thread)	G pipe	water pick up
D	DN50	G2'(G pipe thread)	G pipe	over flow
E	DN50	G2'(G pipe thread)	G pipe	sewage

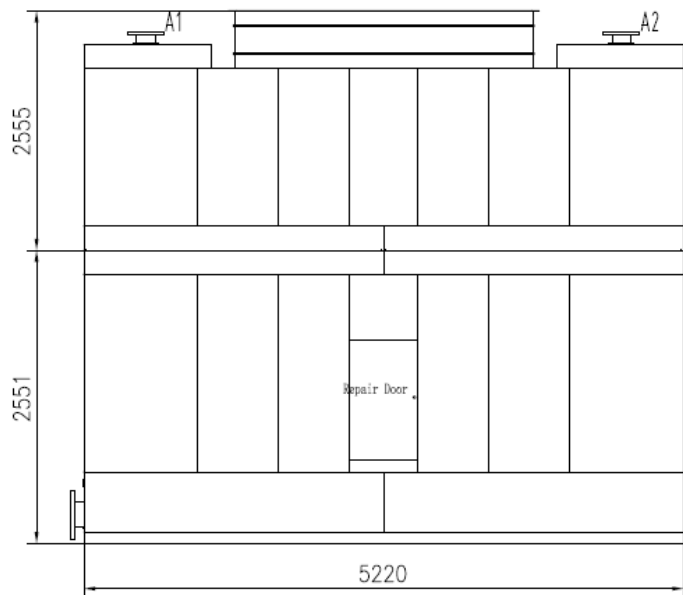


5) Model ROD-852 (D, P, G)

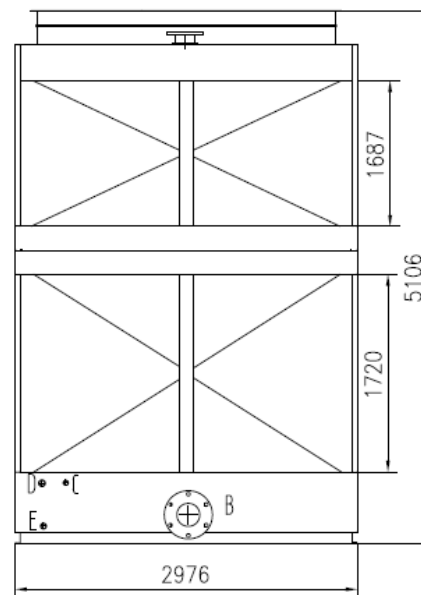


pipe table				
Symbol	Size	standard	seal type	used for
A1	DN150	HG20593,20599	RF	Inlet water
A2	DN150	HG20593,20599	RF	Inlet water
B	DN250	HG20593,20599	RF	Out water
C	DN25	G1'(G pipe thread)	G pipe	water pick up
D	DN50	G2'(G pipe thread)	G pipe	over flow
E	DN50	G2'(G pipe thread)	G pipe	sewage

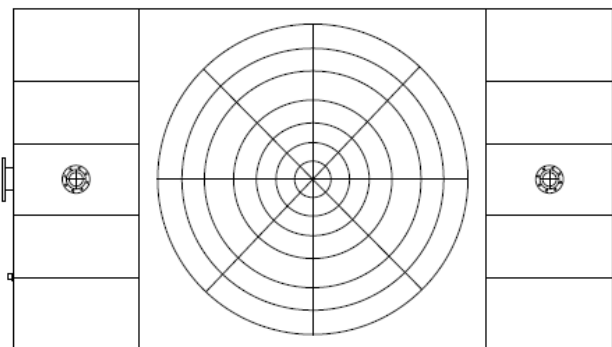
6) Model ROD-854 (D, P, G)



VIEW 2



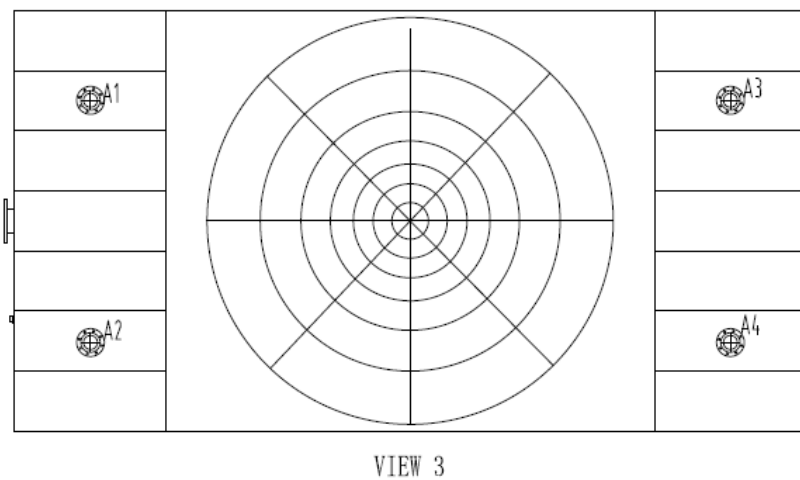
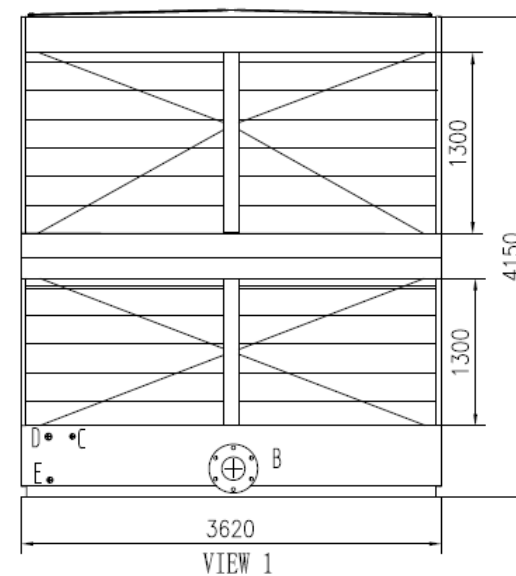
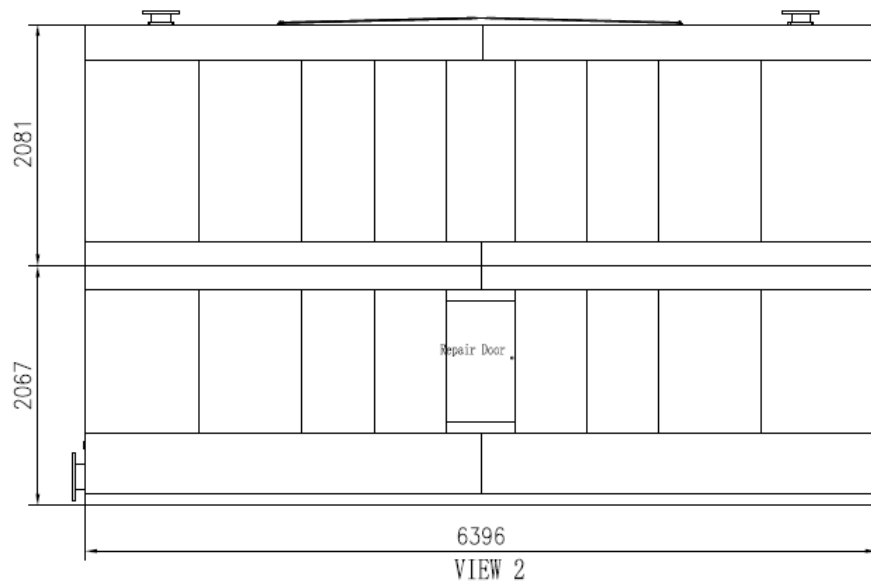
VIEW 1



VIEW 3

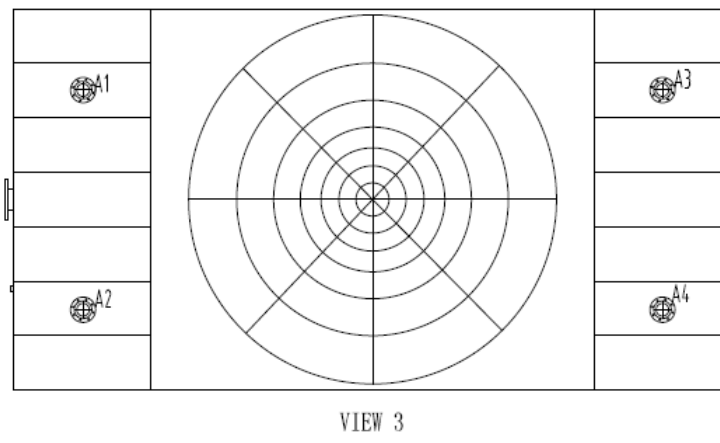
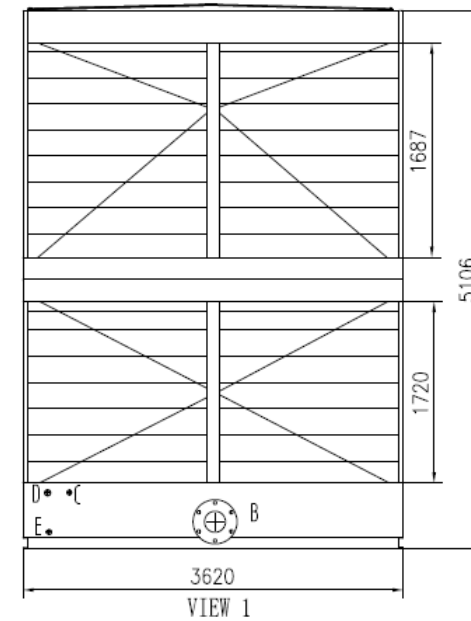
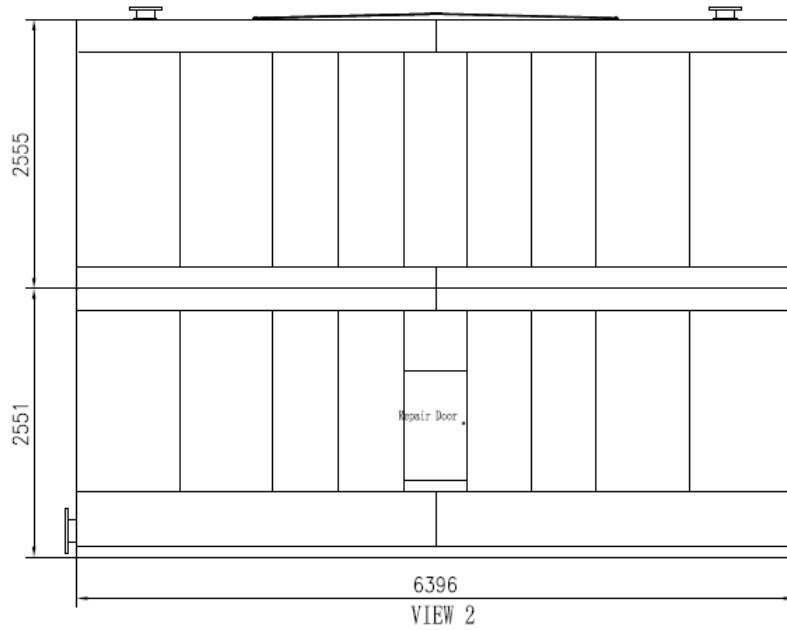
pipe table				
Symbol	Size	standard	seal type	used for
A1	DN150	HG20593,20599	RF	Inlet water
A2	DN150	HG20593,20599	RF	Inlet water
B	DN250	HG20593,20599	RF	Out water
C	DN25	G1'(G pipe thread)	G pipe	water pick up
D	DN50	G2'(G pipe thread)	G pipe	over flow
E	DN50	G2'(G pipe thread)	G pipe	sewage

7) Model ROD-873 (D, P, S, U, L, G)



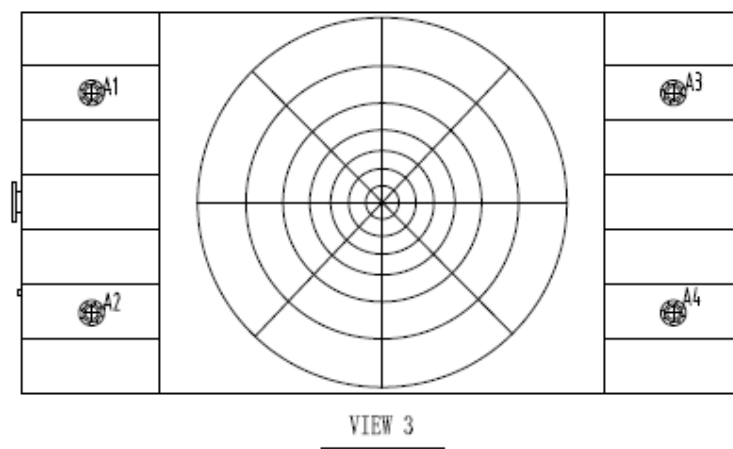
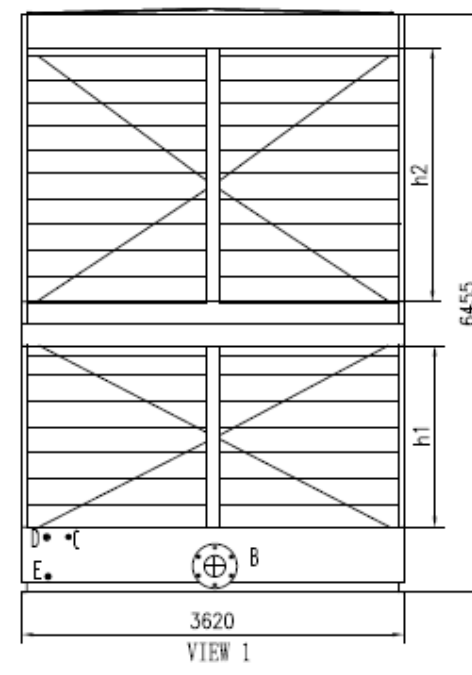
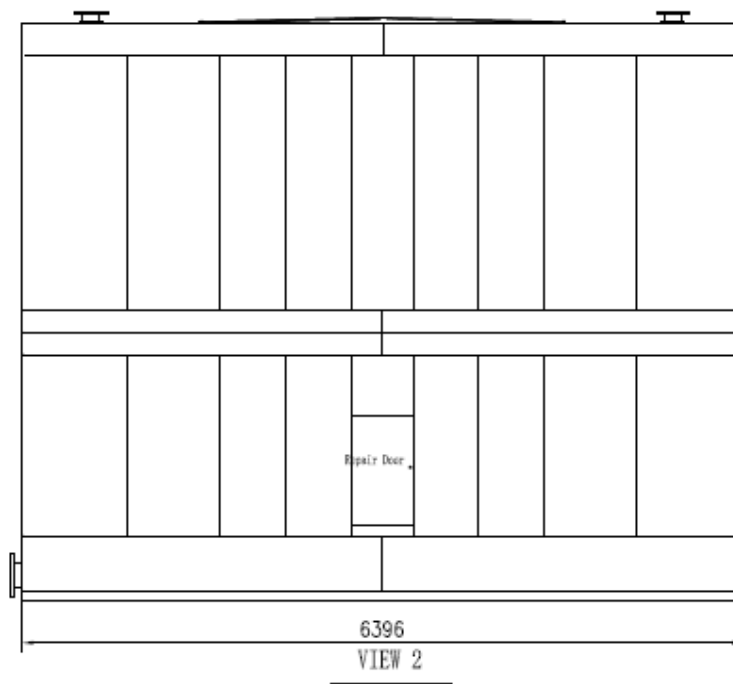
pipe table					
Symbol	Size	standard	seal type	used for	
A1, A2	DN125	HG20593,20599	RF	Inlet water	
A3, A4	DN125	HG20593,20599	RF	Inlet water	
B	DN250	HG20593,20599	RF	Out water	
C	DN25	G1"(G pipe thread)	G pipe	water pick up	
D	DN50	G2"(G pipe thread)	G pipe	over flow	
E	DN50	G2"(G pipe thread)	G pipe	sewage	

8) Model ROD-874 (P, U, L, G)



pipe table				
Symbol	Size	standard	seal type	used for
A1- A2	DN125	HG20593,20599	RF	Inlet water
A3- A4	DN125	HG20593,20599	RF	Inlet water
B	DN300	HG20593,20599	RF	Out water
C	DN25	G1½(G pipe thread)	G pipe	water pick up
D	DN50	G2½(G pipe thread)	G pipe	over flow
E	DN50	G2½(G pipe thread)	G pipe	sewage

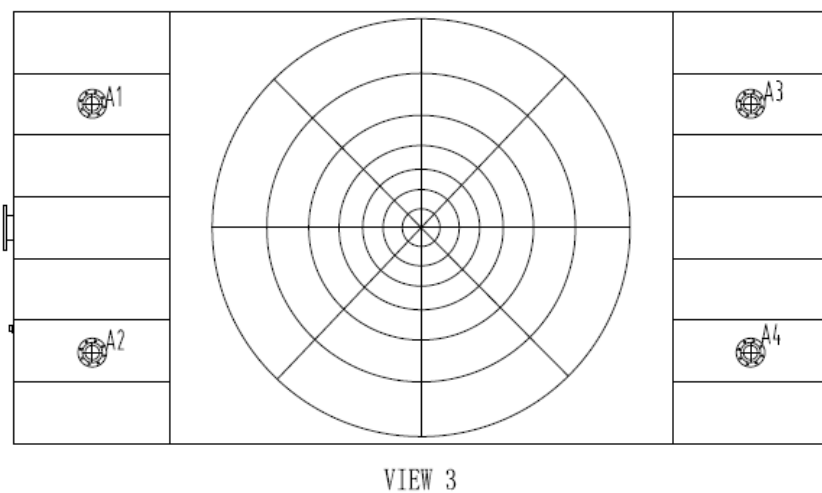
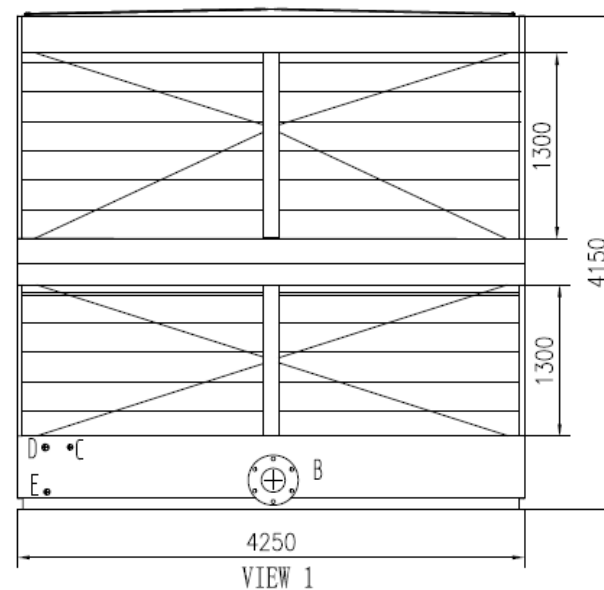
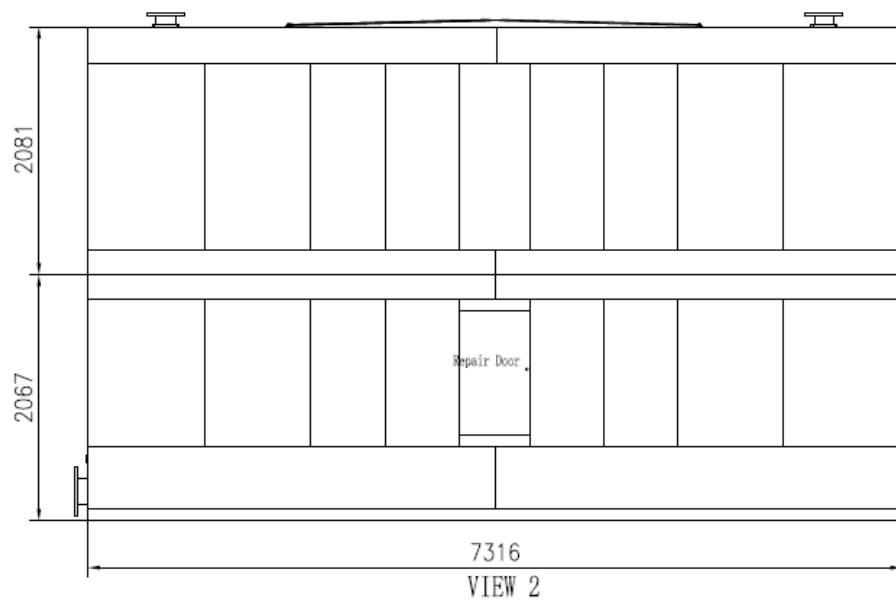
9) Model ROD-875 (P, U, L, G)



Pipe table				
Symbol	Size	Connction Dimension and Standard	Seal Type	Used for
A1. A2	DN150	HG20593, 20599	RF	Inlet water
A3. A4	DN150	HG20593, 20599	RF	Inlet water
B	DN300	HG20593, 20599	RF	Outlet water
C	DN25	G1"(G pipe thread)	G pipe thread	Water make up
D	DN50	G2"(G pipe thread)	G pipe thread	Over flow
E	DN50	G2"(G pipe thread)	G pipe thread	Sewage

Remark :  $h1+h2=4940$

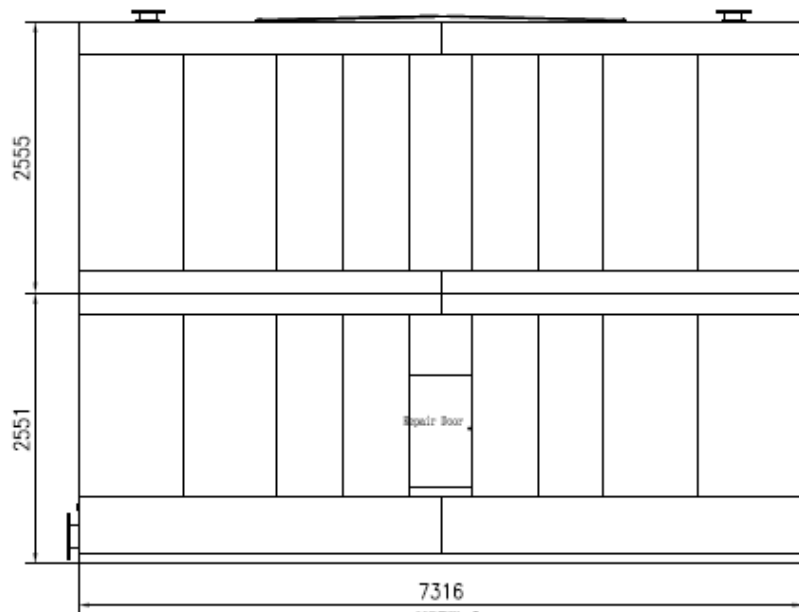
10) Model ROD-893 (D, P, S, U, L, G)



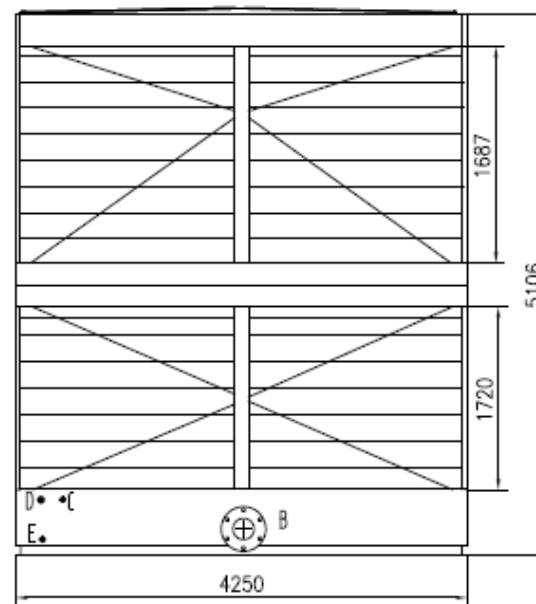
pipe table					
Symbol	Size	standard	seal type	used for	
A1, A2	DN125	HG20593,20599	RF	Inlet water	
A3, A4	DN125	HG20593,20599	RF	Inlet water	
B	DN250	HG20593,20599	RF	Out water	
C	DN25	G1'(G pipe thread)	G pipe	water pick up	
D	DN50	G2'(G pipe thread)	G pipe	over flow	
E	DN50	G2'(G pipe thread)	G pipe	sewage	

remark :  
FKHL-893(D, P) B=DN250  
FKHL-893(S, U, L, G) B=DN300

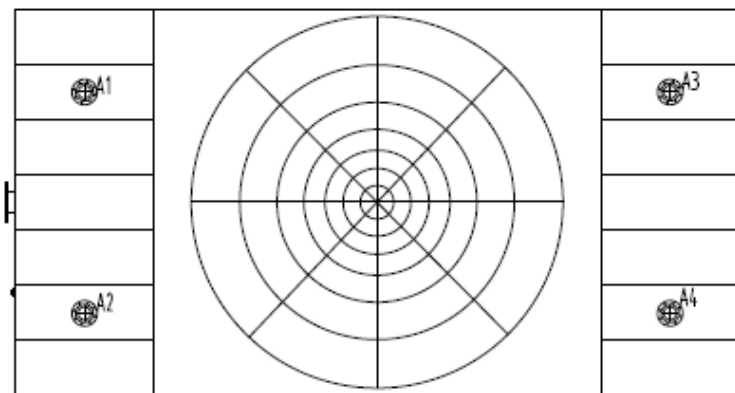
11) Model ROD-894(P, U, L, G)



VIEW 2



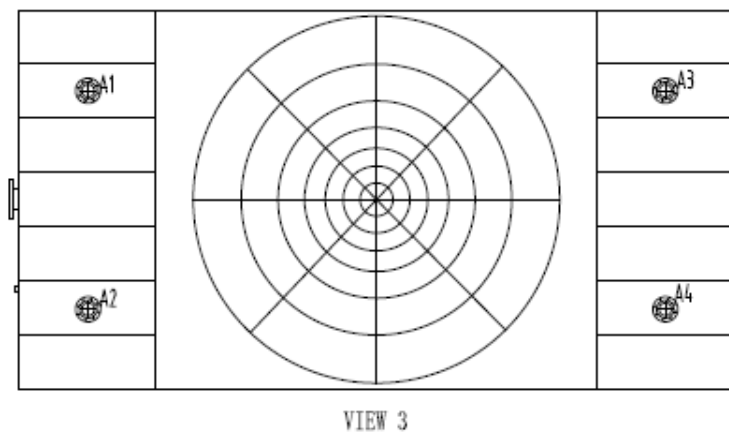
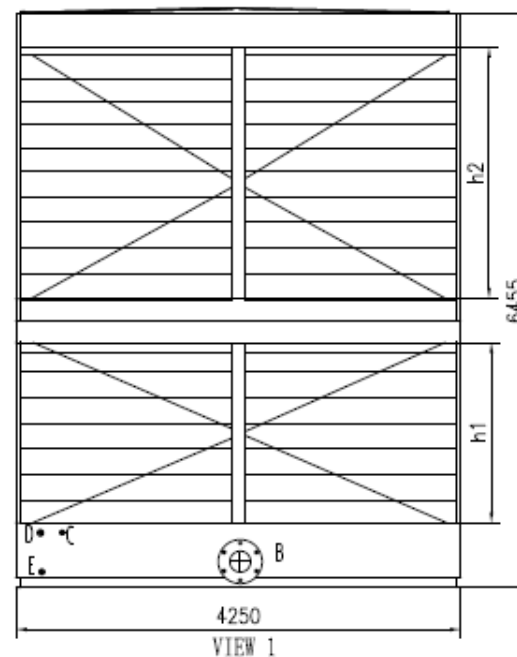
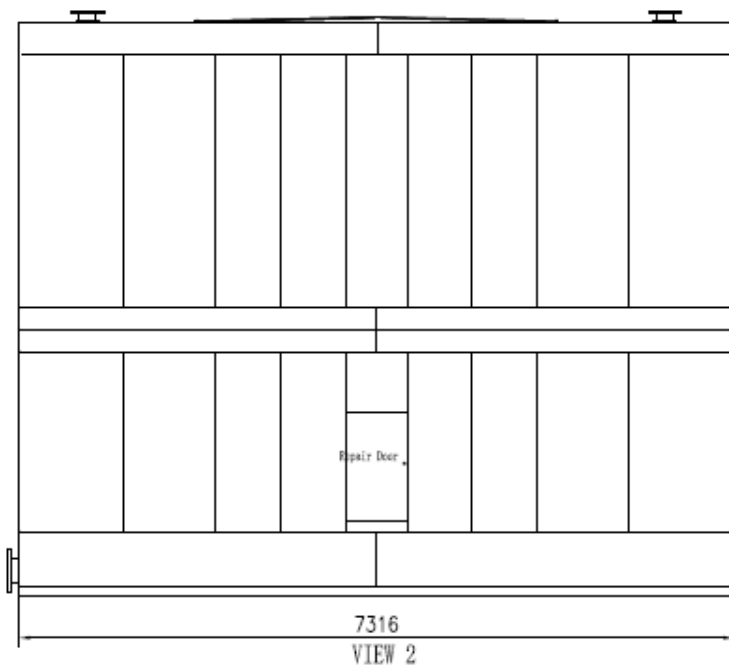
VIEW 1



VIEW 3

pipe table				
Symbol	Size	standard	seal type	used for
A1, A2	DN150	HG20593,20599	RF	Inlet water
A3, A4	DN150	HG20593,20599	RF	Inlet water
B	DN350	HG20593,20599	RF	Out water
C	DN25	G1'G pipe thread)	G pipe	water pick up
D	DN50	G2'G pipe thread)	G pipe	over flow
E	DN50	G2'G pipe thread)	G pipe	sewage

12) Model ROD-895 (P, U, L, G)

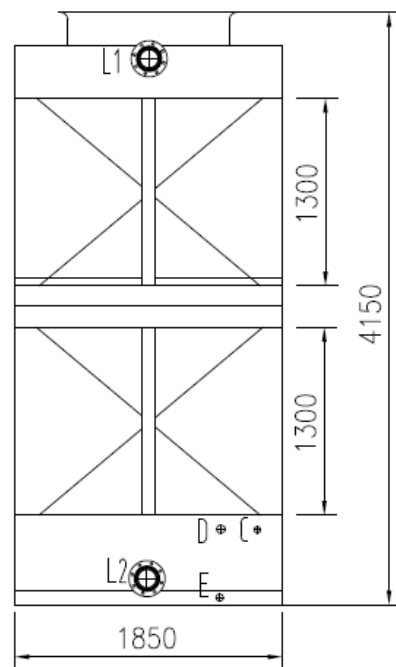


pipe table				
Symbol	Size	standard	seal type	used for
A1, A2	DN200	HG20593,20599	RF	Inlet water
A3, A4	DN200	HG20593,20599	RF	Inlet water
B	DN400	HG20593,20599	RF	Out water
C	DN25	G1½G pipe thread	G pipe	water pick up
D	DN50	G2½G pipe thread	G pipe	over flow
E	DN50	G2½G pipe thread	G pipe	sewage

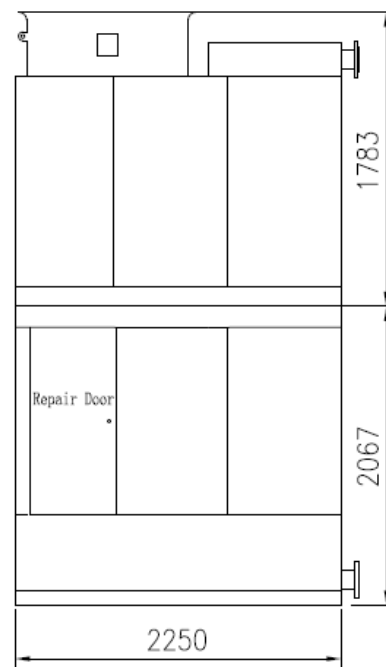
Remark :  $h1+h2=4940$



13) Model ROS-713 (D, P, G)

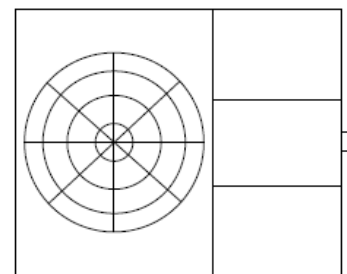


VIEW 2



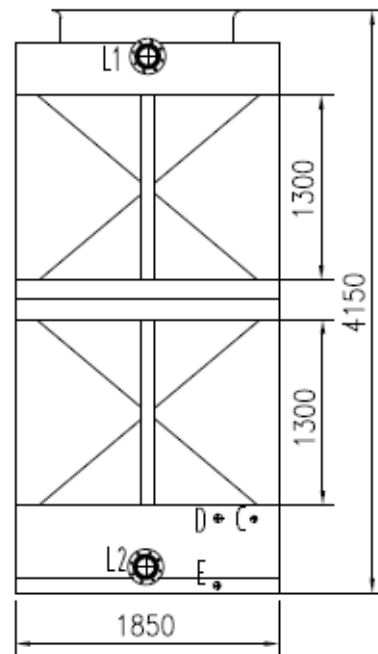
VIEW 1

pipe table				
Symbol	Size	standard	seal type	used for
L1	DN100	HG20593,20599	RF	Inlet water
L2	DN100	HG20593,20599	RF	Out water
C	DN25	G1'(G pipe thread)	G pipe	water pick up
D	DN50	G2'(G pipe thread)	G pipe	over flow
E	DN50	G2'(G pipe thread)	G pipe	sewage

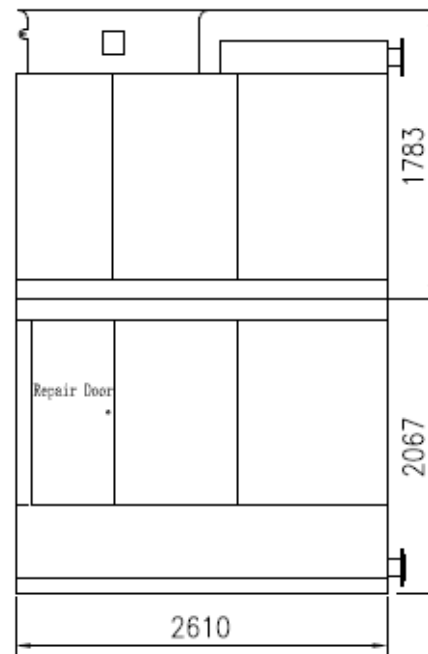


VIEW 3

14) Model ROS-723 (D, P, G)

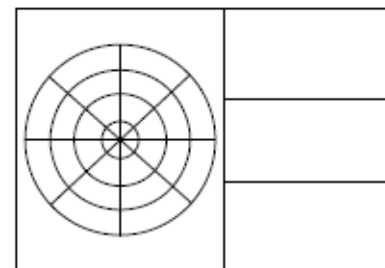


VIEW 2



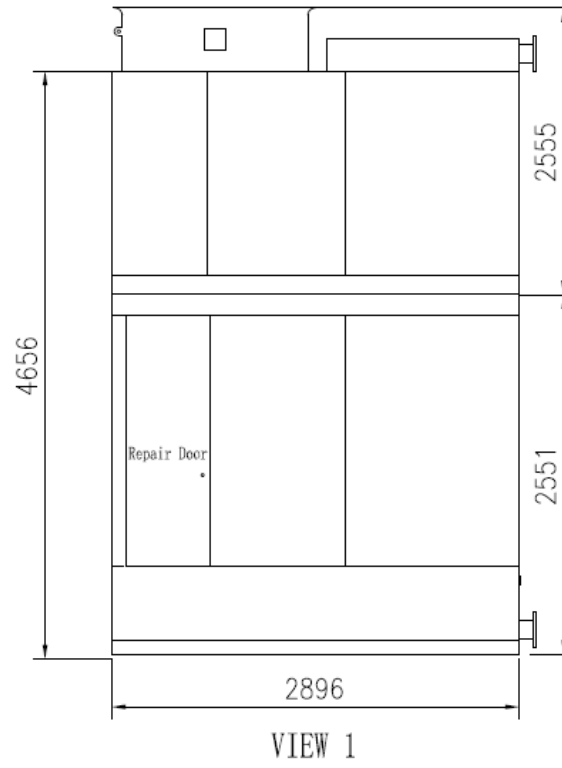
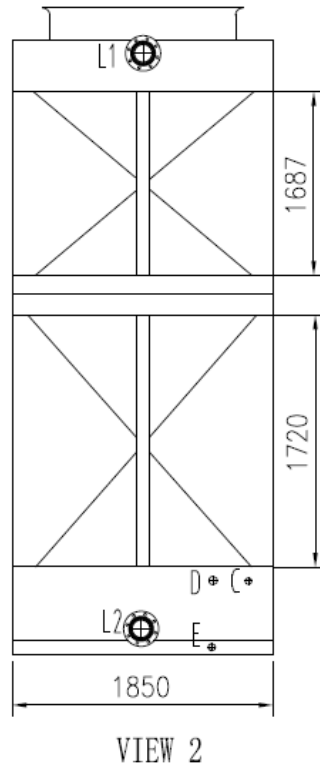
VIEW 1

pipe table				
Symbol	Size	standard	seal type	used for
L1	DN125	HG20593,20599	RF	Inlet water
L2	DN125	HG20593,20599	RF	Out water
C	DN25	G1"(G pipe thread)	G pipe	water pick up
D	DN50	G2"(G pipe thread)	G pipe	over flow
E	DN50	G2"(G pipe thread)	G pipe	sewage

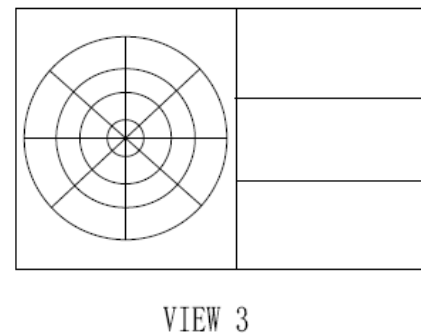


VIEW 3

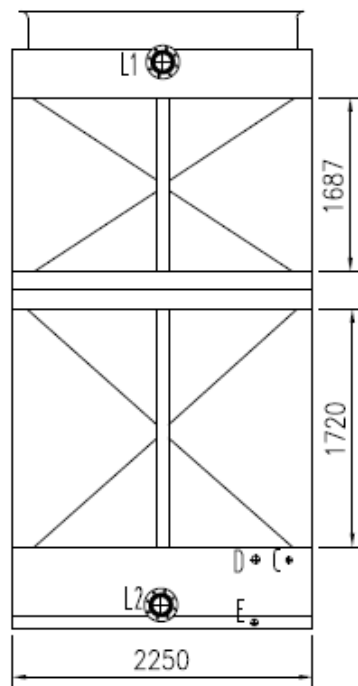
15) Model ROS-734 (D, P, G)



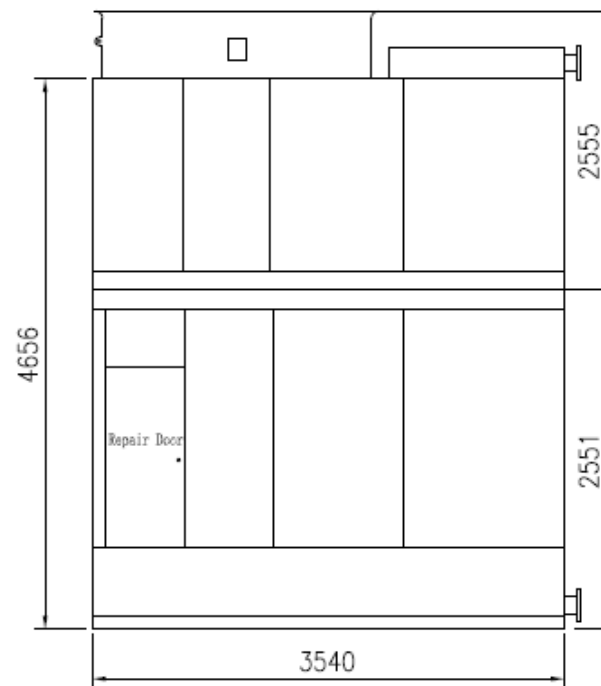
pipe table				
Symbol	Size	standard	seal type	used for
L1	DN150	HG20593,20599	RF	Inlet water
L2	DN150	HG20593,20599	RF	Out water
C	DN25	G1'(G pipe thread)	G pipe	water pick up
D	DN50	G2'(G pipe thread)	G pipe	over flow
E	DN50	G2'(G pipe thread)	G pipe	sewage



16) Model ROS-744 (D, P, G)

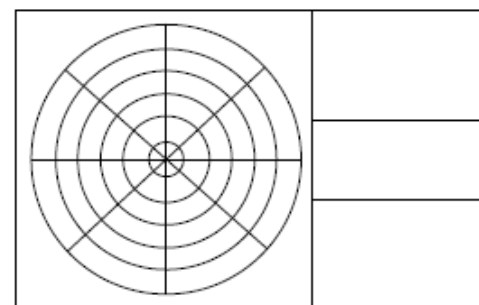


VIEW 2



VIEW 1

pipe table				
Symbol	Size	standard	seal type	used for
L1	DN200	HG20593,20599	RF	Inlet water
L2	DN200	HG20593,20599	RF	Out water
C	DN25	G1'(G pipe thread)	G pipe	water pick up
D	DN50	G2'(G pipe thread)	G pipe	over flow
E	DN50	G2'(G pipe thread)	G pipe	sewage



VIEW 3