

Just Introduced!



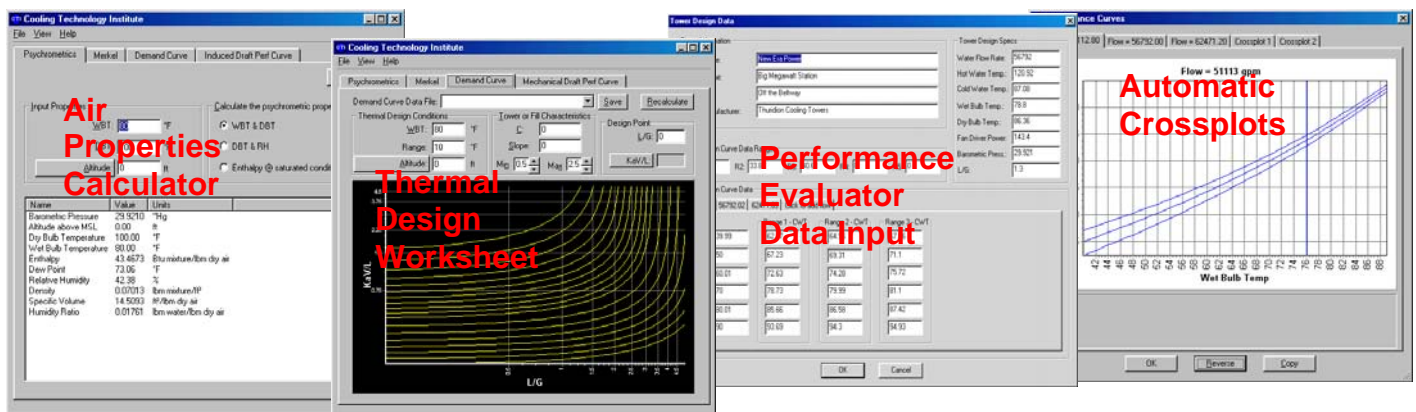
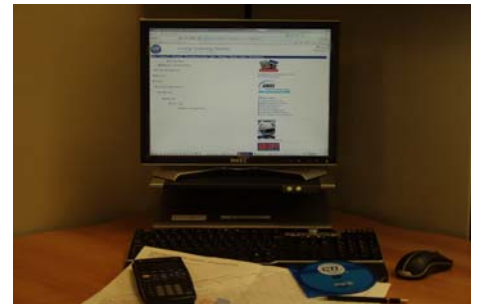
CTI Toolkit Version 3.1

...now Windows Vista and Windows 7 compatible

A great opportunity to upgrade your CTI Blue Book Version 1.0 and CTI Toolkit Version 2.0 Software

Key Features of CTI Toolkit Version 3.1:

- **Air Properties Calculator**; fully ASHRAE Compliant psychrometrics. Interactive.
- **Thermal Design Worksheet** in the “Demand Curve” Tab which can be saved to file and retrieved for later review. Now with printable and exportable graphs.
- **Performance Evaluator** in the “Performance Curve” Tab to evaluate induced draft or forced draft, crossflow or counterflow cooling tower performance. Now calculates percent performance or leaving water temperature deviation. Data can be entered manually or with an input file. Automatic Cross-Plotting. Now with printable and exportable graphs.
- **New and Improved Help Files** guide you through the software, explain performance evaluation techniques and offer tips for use.



Now works with Microsoft Windows 7 and all earlier Windows Operating Systems back to Windows 95
16 MB ram recommended, and 3 MB free disk space required.

Upgrade Now! Only \$25/per upgrade from 3.0 for CTI Members (\$40 for Non-Members)

To Order, Call (281) 583-4087 or visit CTI's Website www.cti.org

Order Today
Call 281-583-4087

"The Performance Curve method is widely recognized as a more accurate method of determining tower capability from measured test data. The new CTI ToolKit Tab Application provides a quick and easy method for anyone to evaluate a performance test using this more accurate method."

- Rich Harrison, Jr. ATC-105 Task Group Chairman

Bill to: _____

Phone: _____ **Fax:** _____

Email Address: _____

Ship to: _____

Phone: _____ **Fax:** _____

Email Address: _____

Charges can be made to Visa, MasterCard or American Express

Card No.: _____ Expiration Date: _____

Signature: _____ CVV; CVC; CID Code: _____

Product	Unit Price	Quantity	Total
CTI ToolKit Version 3.1 (single user license)			
CTI Member	\$395		
Non-member	\$450		
CTI ToolKit Version 3.1 (Upgrade from V1.0 and V2.0)			
CTI Member	\$ 95		
Non-member	\$120		
CTI ToolKit Version 3.1 (Upgrade from V3.0)			
CTI Member	\$ 25		
Non-member	\$ 40		
PerfCurv 3.1 (Stand alone Performance Curve application)			
CTI Member	\$195		
Non-member	\$240		
Shipping for CD-Rom (from Texas): <small>Priority mail \$6; 2nd Day Air \$18; Overnight Domestic \$28; / International (DHL) TBA</small>			

System Requirements:

Microsoft Windows®
 95/98, 2000, XP,
 Vista and Windows 7



Phone: 281.583.4087
 Fax: 281.537.1721
 Web: <http://www.cti.org>

Multi-user site licenses and educational institution pricing available on request